

# **12**-Thirteen

A Collaborative Art Project

Twelve Fine Art Pieces  
Thirteen Artists

# 12-Thirteen

## A Collaborative Art Project

The collaborative art project entitled "12-Thirteen" is a series of twelve fine art pieces by thirteen artists. With each piece, Chris Silkwood combined her medium of glass mosaic with the medium of the collaborating artist. The project was initiated by Chris as a celebration of Houston's visual arts community and the journeys of each participating artist. Imaginations were stretched with each piece and the stroke of trust and confidence extended to the collaborating artists to create this truly one-of-a-kind exhibition.

*I was thrilled and deeply moved when twelve of my favorite artists quickly agreed to participate, Chris says. In many of the pieces, Chris applied her colorful glass mosaic first by studying and paying homage to each collaborator's unique style. The intention was to create cohesion and originality with every piece. In others, the collaborator went first and Chris followed by carefully applying the glass design over various areas of their work.*

The series represents an array of mediums to include acrylic and oils, resin, paper and collage, steel and glass mosaic. In the end, the viewer is presented with a bouquet of visual and sensory expression.

The participating artists include Keith Crane, Kelley Devine, Kermit Eisenhut, Ryan Fugate, Anne-Joëlle Galley, Marsha Glickman, Sharon Kopriva, Carol McKee, Taft McWhorter, Ellen Orseck, Patrick Palmer, Nicola Parente and Chris Silkwood.

The collaborating artists of "12-Thirteen" lovingly dedicate this series to the memory of their friend and colleague Van McFarland—a truly honorable and missed member of the artist community.

We sincerely hope you enjoy the show.



### **CHRIS SILKWOOD**

Chris is a Houston based modern mosaic artist. She honors the ancient technique of mosaic with twenty first century designs. Her work includes fine art wall hangings, sculpture, and functional art pieces.

Chris has a studio and gallery space at Winter Street Studios, an area of Houston recently named by the State of Texas as Houston's newest cultural arts district. Her work has been exhibited in New Orleans, Dallas and Houston galleries, the Nave Museum in Victoria, Texas, and utilized in both film and television.

In 2014 and 2015, Chris co-curated with Gus Kopriva of Redbud Gallery the very popular *True North* and *True South* public art sculpture exhibits along the esplanade of Heights Boulevard.

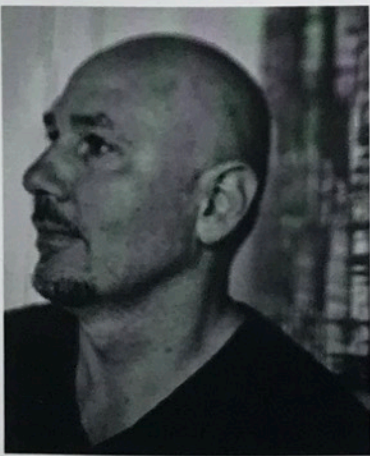
Her mosaic work is unique, ever changing and all about the expression of color. She says, *I am truly ecstatic about the 12-Thirteen exhibition. It was an honor and absolute joy to collaborate with each of these magnificent artists. It is a collection that is close to my heart and will remain a cherished memory.*

[silkwoodmosaics.com](http://silkwoodmosaics.com)





*Urban Waterway, 36" x 30"*



## **NICOLA PARENTE**

Mosaic and acrylic, ink, charcoal powder on panel

Inspired by the changes in metropolitan communities, my paintings and photography define the intersection of daily urban life. I explore re-gentrification and the changing landscape. My work is an ongoing investigation in timelines, movement and the role of light.

Courtesy of: Gremillion & Co. Fine Art, Inc., Houston

[nicolaparente.com](http://nicolaparente.com)